

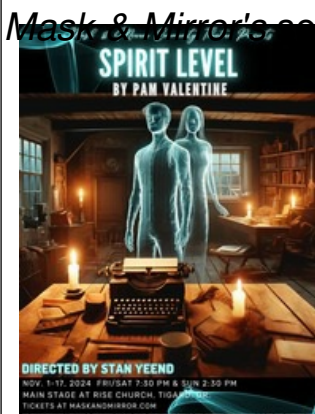


December 2024 Newsletter

- PHOTOS: ***Spirit Level*** ends successful run
- ***Fiction***: In rehearsals, opens Jan 17
- ICYMI: News venue and dates for *UnMasked* shows
- Ticket info: Single show tickets available for all shows
- From the President's Desk
- ***Pride & Prejudice***: Cast is set, opens Feb 28
- Auditions for remaining shows are set
- *M&M* swag makes good stocking stuffers
- Donate to *M&M* and Oregon Cultural, get a tax credit

Spirit Level closes after terrific run

Had the "spirits rising" at Rise



Mask & Mirror's season opener was also the west coast premiere of Pam Valentine's ***Spirit Level***, which opened November 1 and ran for three critically acclaimed consecutive weekends on the Main Stage at Rise Church, in Tigard.

Pat Romans, a co-founder of *Mask & Mirror Community Theatre*, commented on the "skilled and experienced cast," and added "It was smooth, polished, and everyone seemed comfortable, relaxed, and very natural. Kudos to all involved."

Speaking of which, here's a post show shot of the cast and some of the crew of ***Spirit Level***, taken by *Mask & Mirror's* Beth Moore.



Top Row (L-R) Stan Yeend (Director), Patricia Alston (Marcia Bradshaw), Kraig Williams (Mark Webster), Rick Hoover (Tech), Robin Michaels (Guardian Angel) ; Middle row (L-R) Bryce Bristow (Simon Willis), Jeff Ekdahl (Jack Cameron), Patti Speight (Suzie Cameron), Karen Johnson (Flic Willis), Bonnie Scott (Stage Manager), Jodi Johnson (Assistant Director).

In her *Facebook* review, Pat notes that husband Gary Romans, co-founder of *Mask & Mirror*, said "This was the best-prepared opening night show I have ever seen!" Please enjoy some scenes from *Mask & Mirror's* production of ***Spirit Level***. Congratulations to the entire team for doing *Mask & Mirror* proud and delivering a solid season opener.



Patti Speight, Jeff Ekdahl



Bryce Bristow, Karen Johnson, Kraig Williams



Patti Speight, Jeff Ekdahl, Robin Michaels



Karen Johnson, Patricia Alston, Patti Speight



Kraig Williams, Patti Speight, Patricia Alston



Jeff Ekdahl, Robin Michaels, Patti Speight

Fiction: Now in rehearsals, opens Jan 17

Special Correspondence from Virginia Howe-Kincaid as seen in *Tigard Life*



The twice-yearly, edgier *UnMasked* offerings from *Mask & Mirror Community Theatre* continue with Steven Dietz's' ***Fiction*** opening January 17 at the theater's new venue for *UnMasked* productions: *Tualatin United Methodist Church*, 20200 SW Martinazzi Avenue, Tualatin. The play will run for 4 weekends through February 8 with performances on Friday nights at 7:30

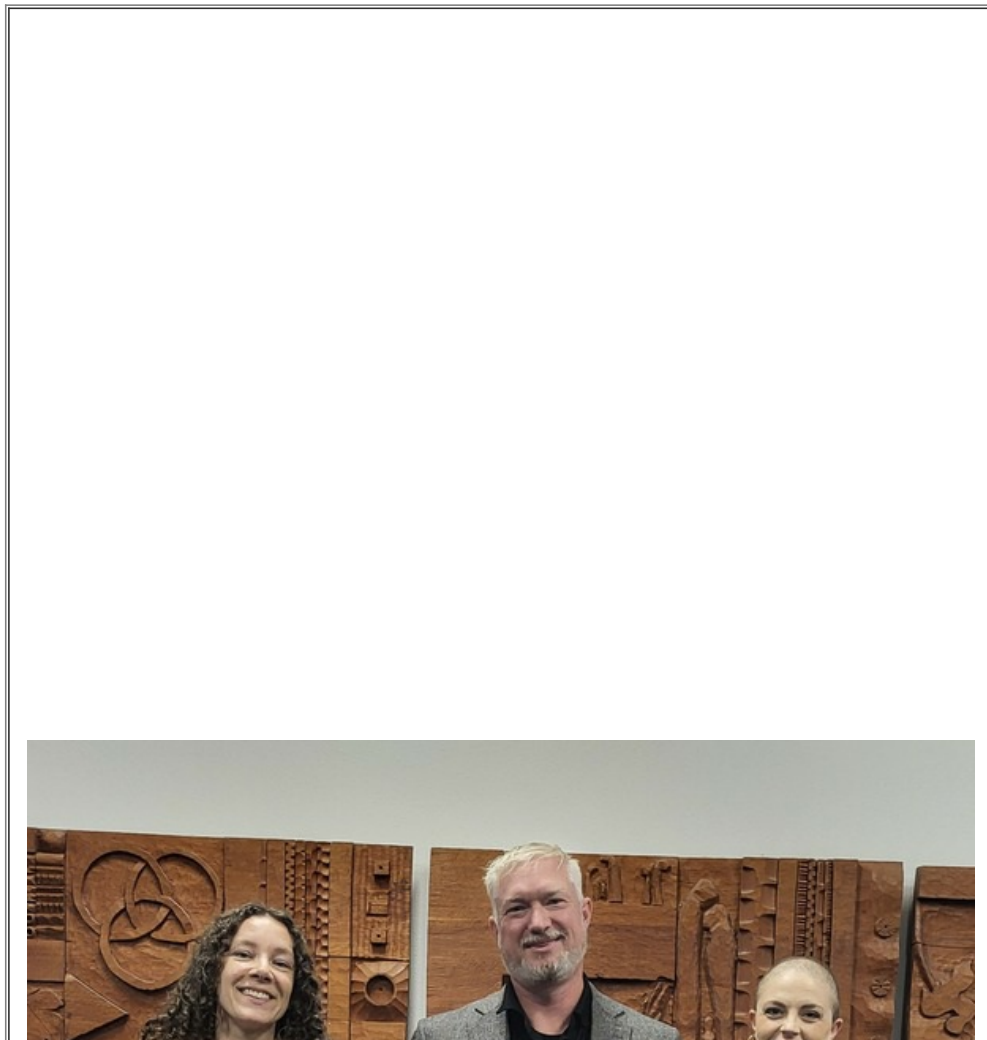
DIRECTED BY TONY BROOM
JAN. 17 - FEB. 8, 2025 FRI 7:30 PM & SAT 3:00PM
TICKETS: www.maskandmirror.com

and Saturday matinees at 3:00. Note that no *UnMasked* Saturday night or Sunday shows will be offered.

To summarize the plot, Linda and Michael Waterman are both successful writers, and their marriage has been exceptionally honest, or so they thought. However, after Linda is diagnosed with a tumor, she asks Michael to share his journals. When she reads them, she discovers he's been keeping secrets about a mysterious woman named Abby whom he met years earlier. What Michael doesn't know is that Linda has her own secret involving Abby who, with her sharp wit and take-no-prisoners attitude, can hold her own with both of them.

What will happen when boundaries between past and present, fact and fiction, and trust and betrayal collide? Perhaps no one's life should be an open book.

Director Tony Broom's cast features Justine Summers as Linda, Evan Seifert as Michael, and Sela Underwood as Abby. Both Justine and Sela are making their *Mask & Mirror* debut.





The cast of ***Fiction***, (L-R) Sela Underwood, Evan Seifert, Justine Summers

Broom's tech crew includes Kathleen Silloway as Production Manager, Jodi Johnson as Stage Manager, Prop Mistress and Costumer, and Steve Hotaling as Light and Sound Design/Operator.

Reflecting on his long-time avocation as a director, Broom states, "Directing ***Fiction*** has been on my bucket list for awhile. It's a rare play that can make you laugh, make you think, and leave you a little choked up. *Mask & Mirror* is welcoming Justine and Sela to its stage for the first time, and Evan is returning after his excellent portrayal as Adrian in ***Private Eyes*** last year. Working with such strong, talented actors is a real pleasure! Please join us in our *Unmasked* series new venue at *Tualatin United Methodist Church*."

What you need to know:

Fiction, by Steven Dietz, directed by Tony Broom

Performances: Jan 17 - Feb 8, 2025, Fri 7:30pm, Sat 3:00pm (Note: Now four weekends, no Sunday performances.)

Location: Tualatin United Methodist Church, 20200 SW Martinazzi Ave, Tualatin (Note: new location for our *UnMasked* series)

Tickets: Order them [here](#).

Mask & Mirror's production of ***Fiction*** is supported in part by the *Oregon Cultural Trust*

and the [Cultural Coalition of Washington County](#) and the [City of Tualatin](#). *Fiction* is presented by arrangement with Concord Theatricals, LLC, on behalf of Samuel French Inc. (www.concordtheatricals.com)

From the President's Desk

By Rick Hoover, President, Mask & Mirror Community Theatre



Well, here we are in the holiday season. I hope you had a wonderful Thanksgiving and are now looking forward to the December holidays (Christmas, Hanukah, Kwanza, etc.).

I hope you were able to see ***Spirit Level***. It was a wonderful show populated by an extremely talented cast and crew. A special nod to Jodi and Bonnie for winning the battle getting the Christmas tree onto the stage each night. Side note...that is my personal Christmas tree which now has been in as many shows on stage as I have in the past 9 years.

Spirit Level was a great opening to our 14th season. Our next show is ***Fiction***, by Steven Dietz, opening January 17th and running for 4 weekends. This is our new schedule at the Tualatin United Methodist Church (TUMC). It will be Friday nights and Saturday matinees.

By the time you get this we will have our cast announced for our next main stage show, ***Pride and Prejudice***, at Rise. This show opens in February. The slapstick

farce ***See How They Run*** has just posted audition information on the website and notifications will go out to everyone soon.

From all of us on the Board of *Mask & Mirror*, the Play Selection Committee and others associated with *Mask & Mirror*, we wish you the happiest of holidays! We will talk again in 2025!

ICYMI: New venue, dates for *UnMasked* Show

Fiction opens Jan 17 at Tualatin United Methodist Church



As announced earlier this fall, our *UnMasked* series of shows will be performed in a new venue, the Tualatin United Methodist Church, 20200 Martinazzi Ave, Tualatin. This is effective with our first *UnMasked* show of the season, ***Fiction***, opening January 17, 2025. In addition, dates and times of our *UnMasked* shows will change.

Performances will be on Fridays (7:30pm) and Saturdays (3:00pm).

Again, this applies to our *UnMasked* series shows only. Nothing changes at our Main Stage at Rise Church shows. Refer to [our homepage](#) for more details.

Single show tickets on sale for all shows

You can buy direct from *M&M's* web site



You can buy tickets for all remaining *Mask & Mirror* shows, including two on the Main Stage at Rise Church or the two



UnMasked shows at our new venue in Tualatin.

Tickets for all remaining shows are now on sale at *Mask & Mirror's* web site (<https://www.maskandmirror.com/box-office.html>).

You can also call (503-893-5945) or email (tickets@maskandmirror.com) for information.

Pride & Prejudice: Cast is set

Opens Feb 28 on the Main Stage at Rise

Kathleen Bean Jones, director for *Mask & Mirror's* production of ***Pride and Prejudice*** is "thrilled with the amazing actors who will be bringing this Jane Austen classic to life."

Congratulations to the cast!

Sophie Duntley - Elizabeth Bennet

Noah Benson - Fitzwilliam Darcy

Karen Johnson - Mrs. Bennet

Allison Burke - Jane Bennet

Jeremy January - Mr. Bingley

Shianna Deck-Ugelstad - Lydia Bennet

Emelia Corazza - Charlotte Lucas

Austin Eckel - Mr. Collins

Mark Putnam - Mr. Bennet

Mercy McVicker - Miss Bingley

Sophia Serrano-Dodd - Mary Bennet

Colemen Smith - Wickham

Diana LoVerso - Lady Catherine de Bourgh

Dakota Taylor - Miss de Bourgh

Ensemble: Mars Amante, David Jones, Bethany Kemper & Sarah Vertner

What you need to know:



Pride & Prejudice, by Kate Hamill, directed by Kathleen Bean Jones

Performances: Feb 28 - Mar 16, 2025, Fri / Sat 7:30pm, Sun 2:30pm

Location: The Main Stage at Rise Church, 10445 SW Canterbury Lane, Tigard

Tickets: Purchase on line [here](#).

This show is presented in part by a grant from the City of Tigard. It's presented by special arrangement with Broadway Licensing, LLC, servicing the Dramatists Play Service collection. (www.dramatists.com)

Audition dates set for all *Mask & Mirror* shows

See How They Run auditions scheduled for February



There are now two ***Mask & Mirror*** shows to follow. Audition dates for those shows have been scheduled.

See How They Run, by Philip King and directed by Rick Hoover, will run May 2 – May 18, 2025, at the Main Stage at Rise. Performances are Fri/Sat 7:30pm, Sun 2:30pm.

See How They Run Auditions: In the "middle school room" at Rise Church, Tigard. Feb 15, 16 at 1:00pm. Call backs, if needed, Feb 18 at 7:00pm) .

Auditions will consist of cold readings from sides from the script - see below for obtaining copies. There are multiple accents in the show, from American to proper

British, to Cockney British to Russian. You do not need to have a polished accent during the audition.

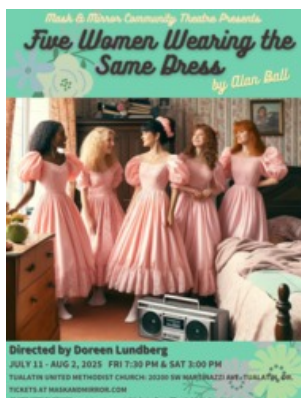
Please bring your headshot, resume and your schedule conflicts to the audition. We can take a picture of you if you do not have a headshot.

Special note: Please be aware that this is a highly physical slapstick comedy. Rick Hoover states that "rehearsals and performances will seem like a two hour aerobics class. Most of the male roles will include some running and jumping. The role of Ms. Skillon will include significant physical comedy.

Rehearsals will be held at Rise Church in Tigard and will begin in late February and go through April. A final schedule will be created after casting. There will be approximately 5 Saturday night rehearsals on the stage.

Check out our Auditions page at <https://www.maskandmirror.com/auditions.html> for more details about available roles, etc. For further information about auditions and to receive an audition form and sides, please contact the director, Rick Hoover, at rick@rickhoover.net.

See How They Run is presented in part by a grant from the [City of Tigard](#), and by arrangement with Concord Theatricals, LLC, on behalf of Samuel French Inc. (www.concordtheatricals.com)



Five Women Wearing the Same Dress, by Alan Ball and directed by Doreen Lundberg is set for performances July 11 – Aug 2, 2025 at Mask & Mirror's NEW location for *UnMasked* shows, the *Tualatin United Methodist Church*, 20200 SW Martinazzi Ave, in Tualatin. Performances are Fri 7:30pm, Sat 3:00pm only.

Five Women Wearing the Same Dress Auditions: May 10, 11
(Call backs May 13 if needed.)

During an ostentatious wedding reception at a Knoxville, Tennessee estate, five reluctant, identically clad bridesmaids hide out in an upstairs bedroom, each with her own reason to avoid the proceedings below. As the afternoon wears on, these five very different women joyously discover a common bond in this wickedly funny,

irreverent, and touching celebration of the women's spirit.

This project is supported in part by the [Oregon Cultural Trust](#) and the [Cultural Trust of Washington County](#) and the [City of Tualatin](#), and presented by special arrangement with Broadway Licensing, LLC, servicing the Dramatists Play Service collection. (www.dramatists.com)

Although audition dates have been set, more details will be available soon. [Bookmark this page](#) or [sign up](#) to receive notices about our auditions.

Looking for some great stocking stuffers?

How about some official *M&M* swag



Through a special deal with *Golf Team Products*, 25% of the price of this fine array of clothing will be returned to the *M&M* coffers. YOU can be part of that effort. There are many choices of style, color and size so you can make the design your own. Visit the website (<https://www.maskandmirror.com/t-shirts.html>) to make your choices! And, we're told, your order will be delivered to your door via your choice of shipping within about 2 weeks.

Mask & Mirror relies on your generosity

Here's how to turn that into an Oregon income tax credit



Theatre companies cannot survive on the revenue from ticket sales alone. We rely on those who can support *Mask & Mirror* in a greater way. We appreciate donations to *Mask & Mirror*, and by making matching donations to *Mask & Mirror* and the *Oregon Cultural Trust*.

[\(https://culturaltrust.org/\)](https://culturaltrust.org/), you not only double your contribution to the arts, you get a tax credit. Here's how it works:

When you make a donation to *Mask & Mirror*, and you also give a matching amount to the Oregon Cultural Trust (<https://culturaltrust.org/>), that amount will be returned to you as a 100% tax credit subtracted from any tax liability when you file your annual Oregon State Income Tax return.

[Click here to go to the Oregon Cultural Trust donation page](#)

The Newsletter was written and produced by Peter Bolger
and edited by Diana LoVerso and John Bartholomew.
We regret any errors or omissions.

[Click to view this email in a browser](#)

If you no longer wish to receive these emails, please reply to this message with "Unsubscribe" in the subject line or simply click on the following link: [Unsubscribe](#)

Mask & Mirror Community Theatre
12210 SW Main St #230923
Tigard, Oregon 97223
US

[Read](#) the VerticalResponse marketing policy.

vertical DELIVERED BY
response
Try It Free Today!